



# Bits & Pieces

NEWSLETTER EDITOR: JUDY RIDDLE

PHOTOS BY MARY EBERHARD

## PRESIDENT'S MESSAGE

It is time to start thinking about how you can help our Guild survive. By February, a new slate of officers will be needed. We need people to chair the Challenge, Program, Fundraising events, & Hospitality could use at least 1 more person plus other roles yet to be determined. The people currently holding "offices" have been wearing more than 1 hat for years. The Guild cannot function without members who contribute to its well-being. Think about this. The way it looks now, THERE WILL BE NO PROGRAM IN 2020, since no one has mentored with Marcia, Francie, Kalynn & Barbara, unless someone steps up now. The "up-side" to this, if there is no program, we will not need any fundraising, maybe just an increase in dues to cover the cost of batting for Comfort Quilts and Quilts of Valor, the AIR quilt expenses and room rental at Gualala Arts. These are JUST MY thoughts and not that of the Executive Board, but SOMETHING HAS TO CHANGE.

*Now on to more pleasant notes:*

I am really looking forward to our upcoming Challenge. Remember to bring lots of finger foods on our opening night, October 5. People really enjoy our cooking & creativity.

The quilters in Redding have asked our Guild for help making quilts for the Northern California fire victims. I'm trying to find a charity coordinating a similar effort more locally (Lake & Mendocino Counties) but if interested in this worthy cause:

Packages can be mailed to their P.O. Box:

Quilter's Sew-ciety of Redding, Inc.

P.O. Box 492581,

Redding, CA 96049

The local Redding drop off location is:

Crafter's Mall-The Sewing Room

2665 Park Marina Drive, Redding, CA 96001

from 10:00am-4:00pm Monday thru Saturday

I have made a decision on my President's quilt. I'm asking for an unfinished size square 8 1/4" x 8 1/4" in any kind of log cabin pattern. (Big surprise). Fabrics should reflect your personality and can be contrasting opposite colors or light and dark. Not to exert any influence, but my favorite color is purple. Please sign your square on the front.

Keep on making items for FOT sales.

I'm looking forward to seeing a good turnout at the Challenge opening.

~Cheryl Faconti

## MARK YOUR CALENDARS

### October 2018 – Quilt Challenge

**Deliver Artwork** October 3, 2018 (10am-2pm)

**Opening Reception** Oct 5, 2018 (5pm – 7pm)

**Pick up Artwork** Nov 15, 2018 (10am-2pm)

### October 18 (Thursday) – FOT workshop

**Oct 19 – 12:30-1:00 Social Hour; 1:00 Guild Mtg**

with Lisa Norton & Lora Zmak Lecture

### Nov 9 (Friday) – FOT Workshop

**Nov 16 – 12:30-1:00 Social Hour; 1:00 Guild Mtg**

with Feather Weights on Parade

### November 23 & 24 – Festival of Trees

\*\*\*\*\*

## MEMBERSHIP

Ladies, please make welcome Sylvia Evans, who joined PPQG at last Friday's guild meeting.

~Gail Spencer

\*\*\*\*\*

## QUILTS OF VALOR

*Thirteen veterans at the Poly trauma Unit of the Palo Alto Veterans Administration Hospital each received a Quilt of Valor on September 18, 2018. Each Veteran expressed amazement at the beauty of the quilts. Some pointed immediately at their choice; others went from one to another and back again before being able to choose. They all expressed great thanks for the gift.*

~Sandy Lockhart

\*\*\*\*\*

## "come play with us"

"Come play with us" has been scheduled to **work on items for Festival of Trees**. Bring your sewing machine and sewing tools. We will have patterns and ideas for you to choose from and fabric can be selected from the Fanny Basket or you can bring your own. Thank you to those who have joined us in the past and completed items for the sales.

**The next workshop will be THURSDAY, October 18 from 10AM until 4PM upstairs at GAC.** Last workshop is scheduled for FRIDAY, November 9. Bring your lunch and joins us!

~Judy Riddle, Sandy Hughes, Cheryl Faconti

\*\*\*\*\*

# LIBRARY

## FROM THE BOOKSHELVES

Log Cabins and their multitude of variations have always been popular with quilters, and our Prez has given us an opportunity to explore this block for her President's Quilt.

Prez Cheryl is asking for an 8-1/2" block of any variation of a log cabin block. In fact she specifically asked that we "express (our) own personalities and forget her preference for purple." Hmmm.

For our beginning quilters let me describe the simplest of log cabins – a block with a square "hearth stone" at the center, traditionally red. Strips are sown one-after-the-other around the center block, maintaining the square shape until it reaches the requested size. The strips are traditionally an inch wide around the center 2" square – but they can be narrow or wider, or even "liberated a'la Gwen Marston" into tapered shapes.

The first traditional variation of the Log Cabin block is to place strips of dark fabric to each of two sides, and light value fabrics on the other two sides. If you sew dark fabric onto adjacent sides (top and one side) then you have a Barn Raising Block; if your darks and lights are on opposite sides then you have Courthouse Steps.

For more advanced quilters there is the Heart Log Cabin, The Center Star, Twisted Logs, and Pineapple. In our library some of the variations are described in the following books, and you will almost certainly find more. *Log Cabin Quilts – New Quilts from Old Favorites* an AQS book; *Pineapple Quilts* another AQS book; *Lively Little Logs: Making Log Cabins in Miniature* by Donna McConnell, and *Log Cabins with a Twist* by Barbara T. Keampfer.

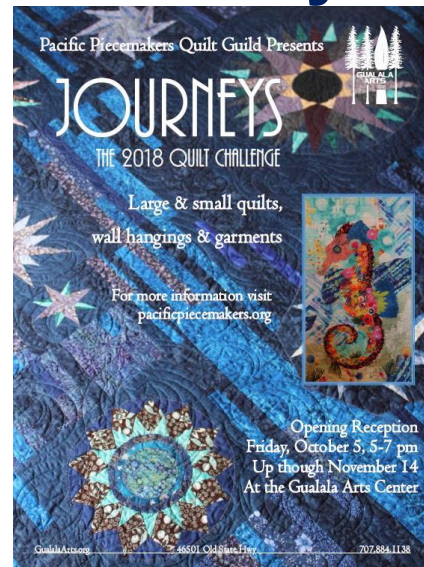
Log-in for some fun.

~Iris Lorenz Fife – your librarian

\*\*\*\*\*

# 2018 CHALLENGE

## “Journeys”



### Important dates for your calendar

**Deliver Artwork** October 3, 2018 (10am-2pm)

**Opening Reception** Oct 5, 2018 (5pm – 7pm)

**Quilt show** will be October 5 to November 14, 2018.

**Pick up Artwork** Nov 15, 2018 (10am-2pm)

### **Wednesday, Oct. 3 is drop off day – between 10AM**

**and 2PM.** If this doesn't work for you, please find someone who can deliver your quilt piece for you. No work will be accepted after 2:00 PM on October 3. Don't forget to bring your hang rod marked with your name & the title of your piece in ink or masking tape (this is a dowel or slat cut to fit into the quilt sleeve, measuring 1" smaller than the width of the quilt). Please provide your artist statement at this time as well so we can assemble the Guild's binder in advance.

For planning purposes, please let us know as soon as possible if you are submitting a large bed-size quilt or other piece that will need special attention. Postcards - the idea here is to demonstrate that quilts come in all sizes & shapes, bed size, wall art, table coverings, bags, clothing & POSTCARDS! To plan for display, we need to know how many of these to expect. Please let me know as soon as you can if you will be submitting postcards.

The reception is always very popular and everyone looks forward to our tantalizing treats. We expect a larger audience this year as there is another event at GAC overlapping our own. So, please bring your favorite appetizer to the conference room or the kitchen. We could use a couple of volunteers to help with setup & cleanup after the reception. If you can help, contact Marcie Johnston [marciej2015@outlook.com](mailto:marciej2015@outlook.com).

---Cheryl Harris (707)294-6423 or [cheryleharris@sbcglobal.net](mailto:cheryleharris@sbcglobal.net)



# 2018 PROGRAMS

On **THURSDAY, October 18**, we will have a one-day workday to make items for the FOT sale.

Speakers at the Guild meeting on October 19 will be **twin sisters, Lisa Norton and Lora Zmak**, "How a Quilter is Pieced".



We will not have a workshop in November. However, at the guild meeting on

**November 16**, we will have "**Featherweights on Parade**" and learn from **Ted and Rita Maddock** how to determine the birthdate of a featherweight, history, maintenance tips, and what to look for when

purchasing a featherweight. We encourage all of you who have a featherweight to bring it to the meeting. You will be able to find out about your particular machine. After



the meeting, the speakers will conduct a 2-3 hour clinic for a modest fee for those who wish to learn how to maintain, lube and trouble-shoot your machine.

- **October 18** – Festival of Trees Workshop
- **October 19** – Guild Meeting. Lecture by Lisa Norton and Lora Zmak, "How a Quilter is Pieced"
- **November 9** – Final Festival of Trees Workshop
- **November 16** – Guild Meeting. Lecture: Featherweights on Parade with Ted and Rita Maddock
- **December** – No meeting. Happy Holidays!!
- **January 18** – Comfort Quilt workshop 10AM-4PM
- **February 15** – Lecture on Landscape Quilts by our own Caroline Ogg
- **March 14** – Ice dying workshop with Jenny Henderson

~ *Marcia Luchini and Francie Angwin*

## SEPTEMBER SHOW AND TELL



Class projects from Koolish workshop



Comfort Quilt by Janice Batchelder



Jacket made by Kalynn Oleson and modeled by Polly Dakin

## SEPTEMBER WORKSHOP

AND

LECTURER

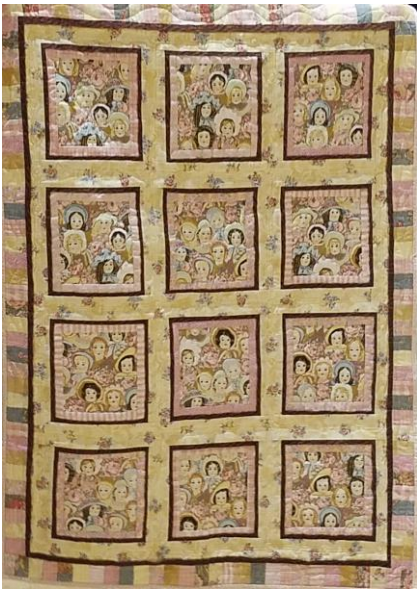


**Lynne Koolish**  
workshop: Day one "A Mixed Media, Painting and Surface Design."; Day Two "Color Pop, Intentional Improvisational Quilts."



Jacket made by Kalynn Oleson





Comfort Quilt  
made by Iris  
Lorenz-Fife



Tablerunner by  
Melissa Finley



Personal quilt  
made by  
Caroline Ogg



Quilt top  
donated by  
Caroline Ogg



Quilt of Valor made by  
Marcie Johnston



Comfort Quilt  
made by  
Marcie Johnston



Quilt of Valor donated by  
quilter, Sharon Thorpe,  
(a friend of Pat Connell)